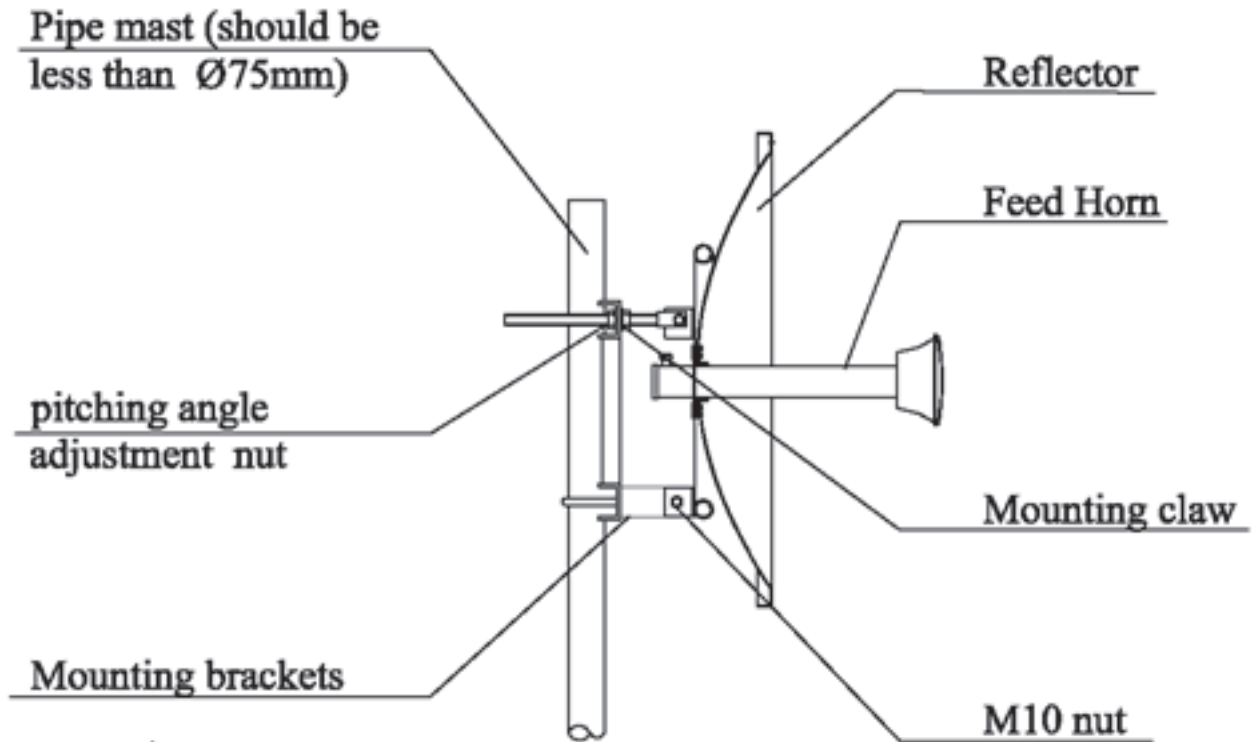




Quick Setup Guide

WIS-AND5829

1 Install the antenna



- 1 Attach the antenna to a pole which is less than $\text{Ø}75\text{mm}$.
- 2 Mounting the upper claw with the 'U' bolt and groove across the pole and at another side tighten with the nuts. Then mounting the down claw with the same way.
- 3 To adjust you should loosen all three tilt angle adjustment nuts and the elevation rod. After the angle is confirmed, tighten all the nuts.

⚠ WARNING

Avoid using this product during an electrical storm. There may be a remote risk of electric shock from lightning.

2 Connect to wireless base station



N-type connector

RP-SMA connector

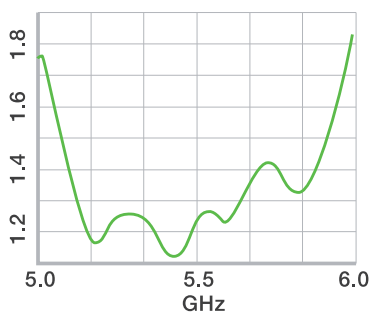
Pigtail

Connect the antenna to the base station, here we use **WIS-S5300**. With this model, you need a pigtail to connect the N-type connector on the antenna and the RP-SMA connector on the wireless device. You'll need two of them.

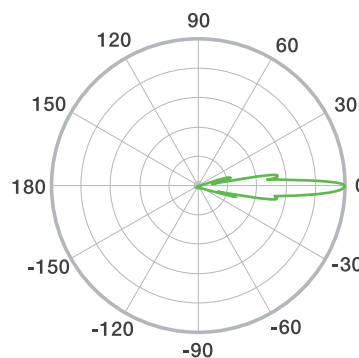
⚠ NOTE

The cable length would interfere your radio system performance. Please choose a proper length pigtail.

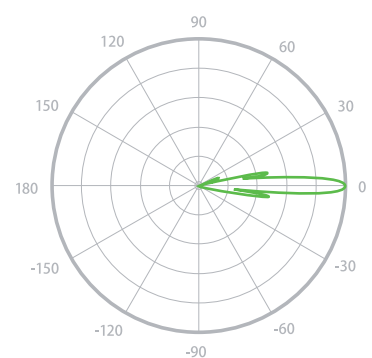
3 Antenna Specification



VSWR



Azimuth



Elevation

SUPPORT

For more guide and help, please go to
<http://www.wisnetworks.com/support>

You can also contact
support@wisnetworks.com
We'll reply you within one weekday.

QUALIFICATION STATUS

QC: PASSED

Warranty Info

Model:	S/N:
Purchase Date:	Distributor:
Customer:	Address:
Contact:	Tel/Mobi:

Terms of Warranty:

You have 1 year warranty service from the date of purchasing Wisnetworks products.

In case of any below condition would not covered by warranty:

1. Damage by transportation and handling.
2. Damage by unauthorized disassembly.
3. Non-compliance of the using environment.
4. Force majeure factors like fire, earth quake, lightning, etc.
5. Human reasons without according to the guide or user manual.
6. Warranty S/N different with device S/N or obliterated