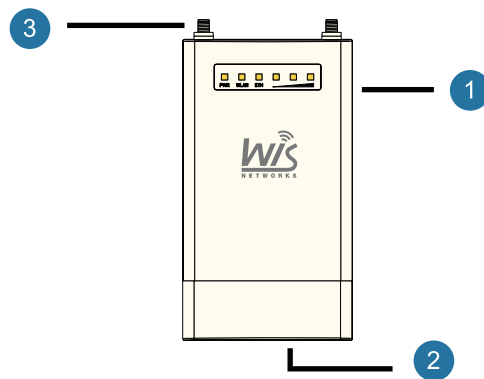




Quick Setup Guide

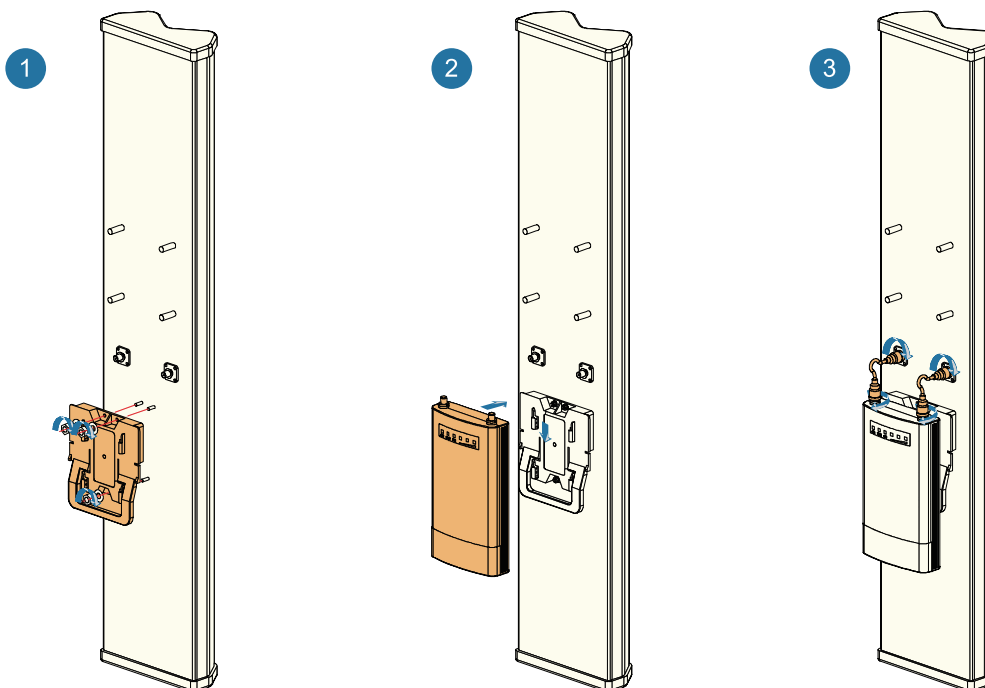
WIS-S5300

1 Interface



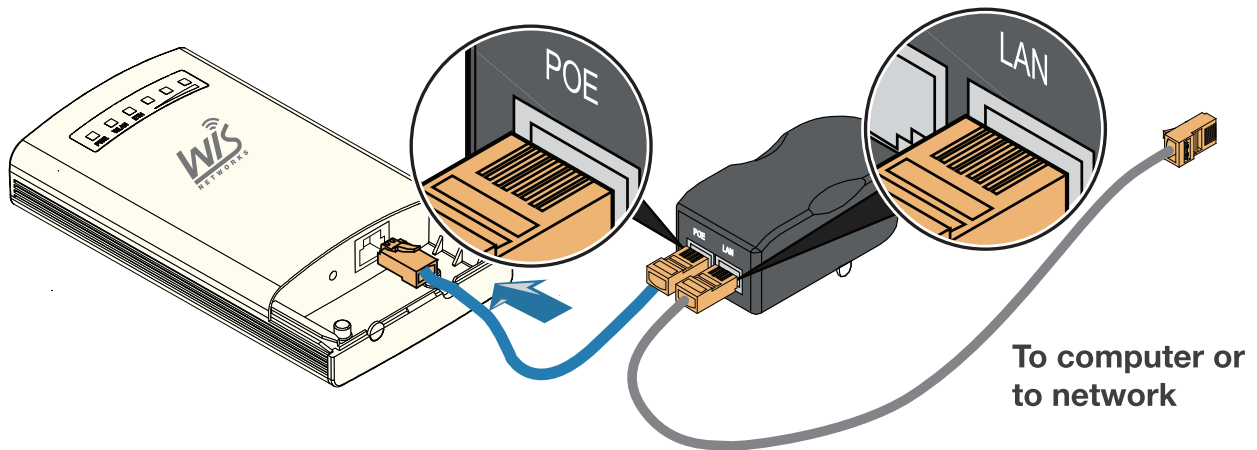
No.	Interface	Instruction
1	LED PWR LED WLAN LED ETH LED RSSI	On/Power up, Off/Power down Off/Disconnected, Flashing/Data Transfer Off/Disconnected, Flashing/Data Transfer 1/Weak, 2/Good, 3/Strong
2	Internal Interface	24V Passive PoE LAN port and Reset button
3	RP-SMA Connectors	Connect to antenna

2 Install with antenna



- 1 Mount the bracket onto the back of antenna(here we using WIS-ANS5819-120) with 3*M3 screw nuts.
- 2 Put the WIS-S5300 on the top of the slot on the bracket, drag down to make the radio stuck into the bracket.
- 3 Connect the device to antenna using two RF cable and screw tightly.

3 Connect the cable



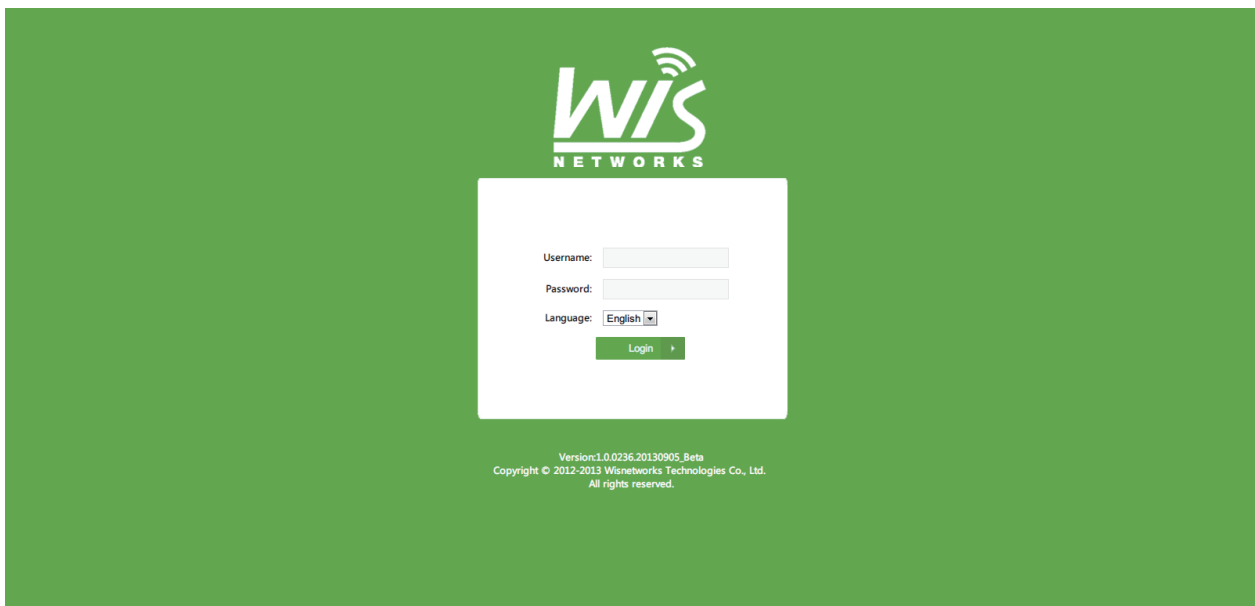
Connect one end of an Ethernet cable to the **POE** port of the provided PoE DC Adapter and the other end of the Ethernet cable to the RJ45 port of the device. Then, connect the **LAN** port of the PoE DC Adapter to a PC or switch using another Ethernet cable. Finally, plug the PoE DC Adapter into a standard electrical wall socket.

⚠ Attention

If you use other PoE Adapter which is not provided by Wisnetworks, we can't provide warranty service if damage caused.

4 Configure the device

Open your browser and go to **192.168.1.2** and input username **admin** and password **admin**, then you can login and start software setting.



SUPPORT

For more guide and help, please go to
<http://www.wisnetworks.com/support>

You can also contact
support@wisnetworks.com
We'll reply you within one weekday.

QUALIFICATION STATUS

QC: PASSED

Warranty Info

Model:	S/N:
Purchase Date:	Distributor:
Customer:	Address:
Contact:	Tel/Mobi:

Terms of Warranty:

You have 1 year warranty service from the date of purchasing Wisnetworks products.

In case of any below condition would not covered by warranty:

1. Damage by transportation and handling.
2. Damage by unauthorized disassembly.
3. Non-compliance of the using environment.
4. Force majeure factors like fire, earth quake, lightning, etc.
5. Human reasons without according to the guide or user manual.
6. Warranty S/N different with device S/N or obliterated