



# Quick Setup Guide

WIS-A7900D

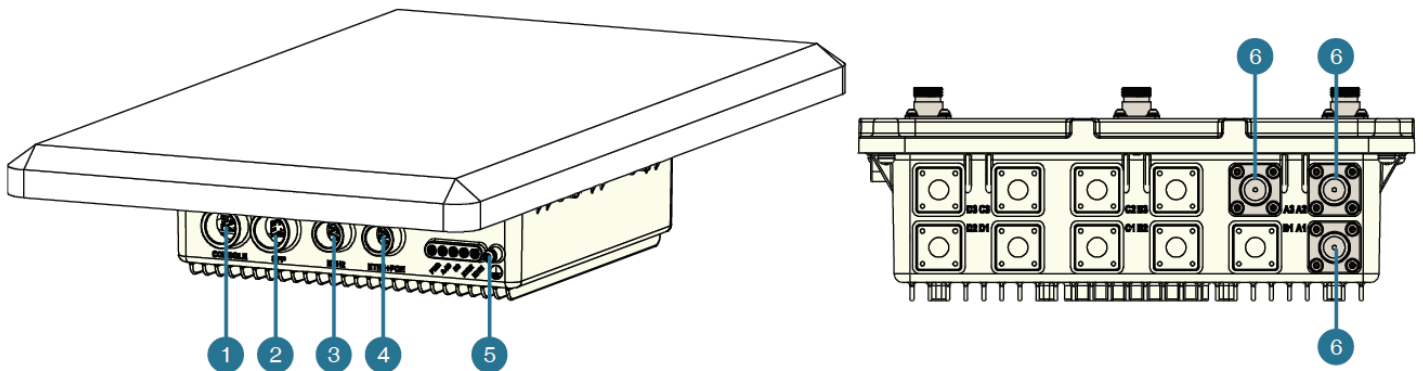
# 1


## Package Content

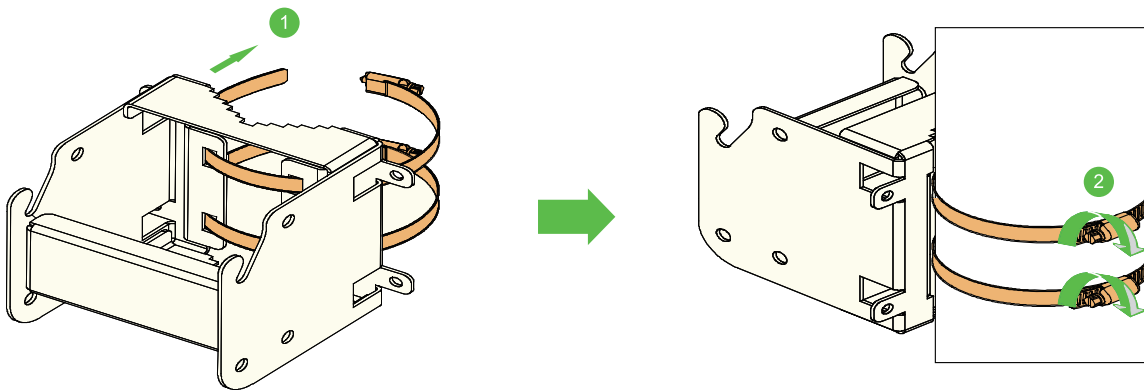
- WIS-A7900D \* 1
- Mounting Kits \* 1
- Waterproof Connector \* 1
- Power Cord
- Configure Cord
- Grounding Cord
- Quick Setup Guide

# 2

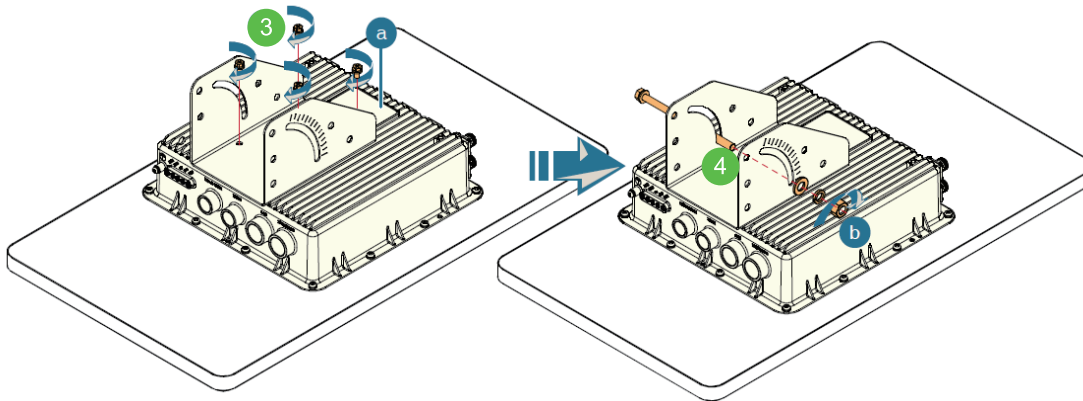
## Interface



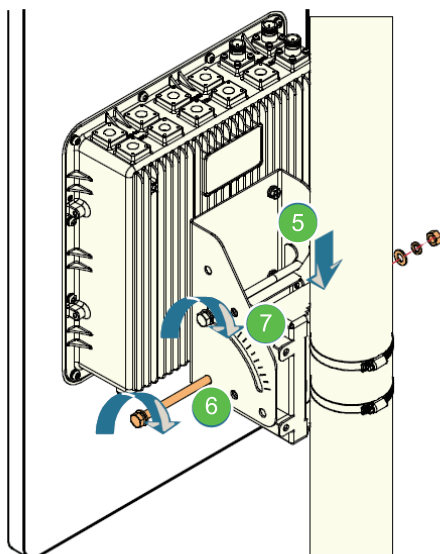
No.	Name	Remarks
1	CONSOLE	RS232 Cable
2	SFP	BASE1000-X Fiber Connector
3	ETH2	BASE1000-T Ethernet
4	ETH1+POE	BASE1000-T Ethernet with PoE
5		Grounding Terminal
6	5G CONNECTORS	For 5GHz Antenna



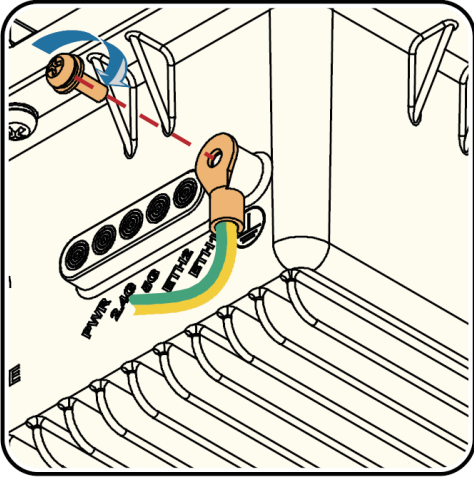
- 1 Thread the steel rim into the mounting bracket
- 2 Tighten the steel rim on a pole



- 3 Put the tilt bracket aiming at four screw hole on the back of the base station, place and tighten the screw.
- 4 Place the M8 long bolt across the tilt bracket as showed above. Screw the nut tight with plain washer and spring washer.

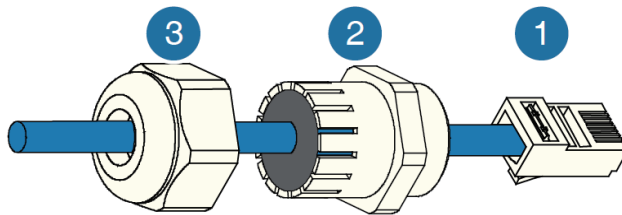


- 5 Aim the long bolt of the tilt bracket at the bayonet of the mounting bracket.
- 6 Get an appropriate tilt angle of the base station, then put the M8 long bolt into the tilt bracket as showed above, screw the nut tight with plain washer ,and spring washer.
- 7 Make sure the other long bolt is well-tighten.

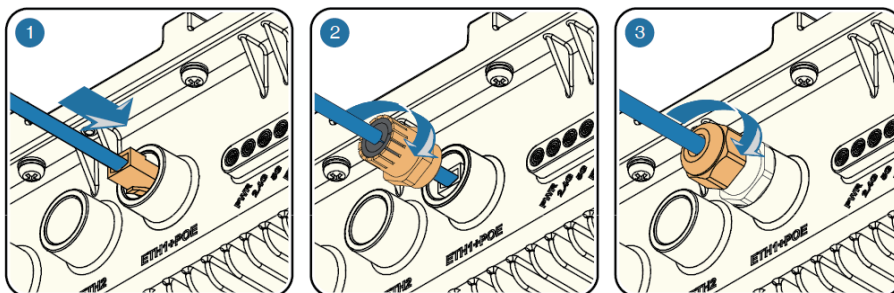
**1** Grounding Cable**⚠ Attention**

Grounding the device would greatly improve the lightning protection level.

We strongly recommend every base station should be properly grounded.

**2** Ethernet Cable

First, cross the cable through the waterproof connector just showed above.



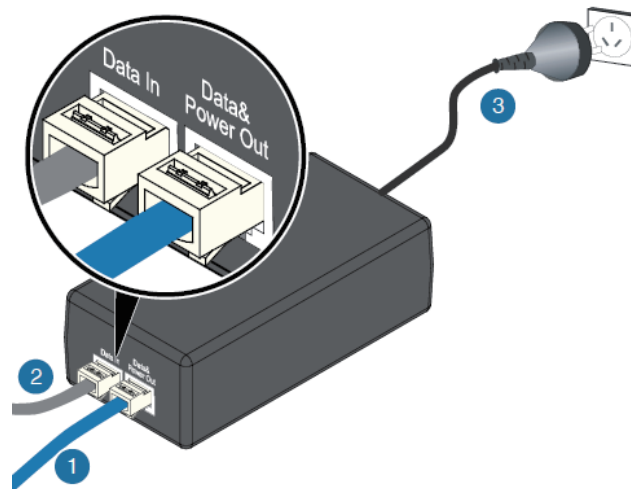
Second, plug in the cable and screw the connector tight.

**⚠ Note**

Use CAT-6 or CAT-5E shield Ethernet cable

## 5

## Power on the Device



Connect one end of an Ethernet cable to the **Data&Power Out** of the provided PoE Adapter and the other end of the Ethernet cable to the **ETH1** port of the device. Then, connect the **Data In** port of the PoE DC Adapter to a PC or switch using another Ethernet cable. Finally, plug the PoE DC Adapter into a standard electrical wall socket.

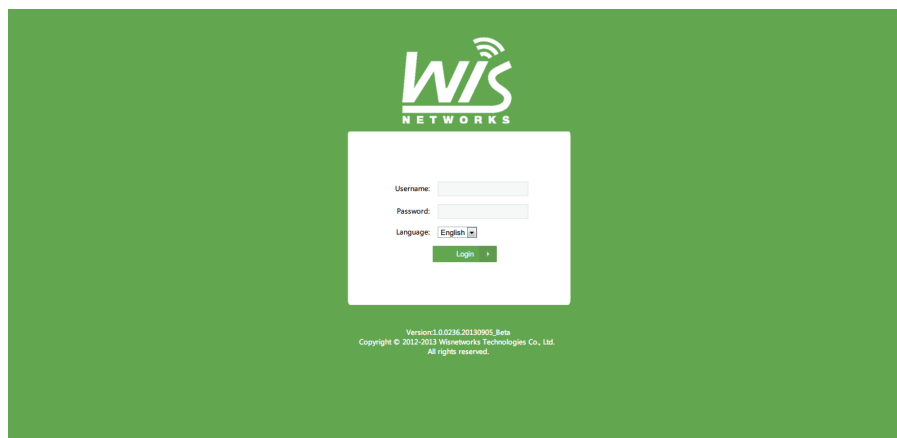
### ⚠ Attention

If you use other PoE Adapter which is not provided by Wisnetworks, we can't provide warranty service if damage caused.

## 5

## Web Configuration

Open your browser and go to **192.168.1.3** and input username **admin** and password **admin**, then you can login and start software setting.



# SUPPORT

For more guide and help, please go to  
<http://www.wisnetworks.com/support>

You can also contact  
**support@wisnetworks.com**  
We'll reply you within one weekday.

## QUALIFICATION STATUS

QC:       PASSED      

---

## Warranty Info

Model:	S/N:
Purchase Date:	Distributor:
Customer:	Address:
Contact:	Tel/Mobi:

### Terms of Warranty:

You have 1 year warranty service from the date of purchasing Wisnetworks products.

In case of any below condition would not covered by warranty:

1. Damage by transportation and handling.
2. Damage by unauthorized disassembly.
3. Non-compliance of the using environment.
4. Force majeure factors like fire, earth quake, lightning, etc.
5. Human reasons without according to the guide or user manual.
6. Warranty S/N different with device S/N or obliterated