

8-Port Gigabit POE Switch

8-port 802.af/at Gigabit PoE and Port 1-2 MAX 60W

WIS-SG800P

Product Overview

8 Port Gigabit PoE Switch, using high-quality high-speed network IC and the most stable PoE chip, the switch incorporates the latest AI functions, equipped with two types port priorities, PoE priority and Network priority, one-key smart. The PoE port meets the 802.3af or 802.3at standard. At the same time, port 1/2 supports HiPoE and the power can reach 60W; The power consumption indicators can help to understand the overall power consumption of the product easily. This series of PoE switches can provide seamless connection for 10/100M Ethernet, and the PoE power supply port can automatically detect and supply power to powered devices that comply with IEEE802.3af or IEEE802.3at standards, and non-PoE devices intelligently detect no power supply, only data is transferred.

Features

Gigabit PoE

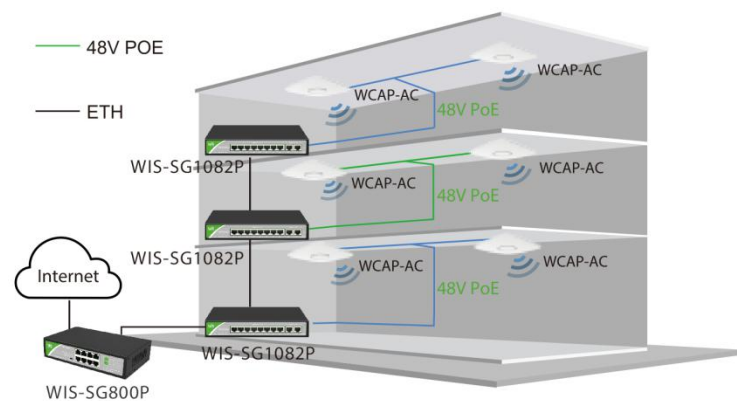
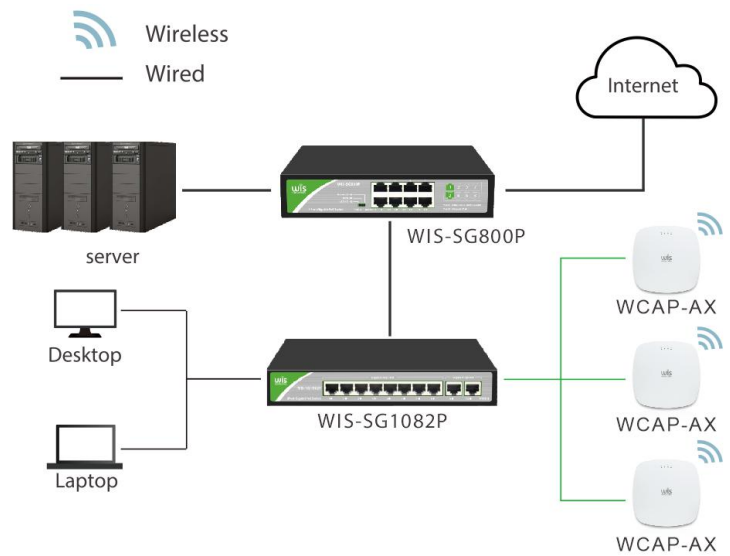
- ✦ 8* Gigabit PoE Ports
- ✦ Port 1/2 supports MAX 60W
- ✦ Apply to 802.11ac series wisnetworks products

Extremely Wide Voltage Scale

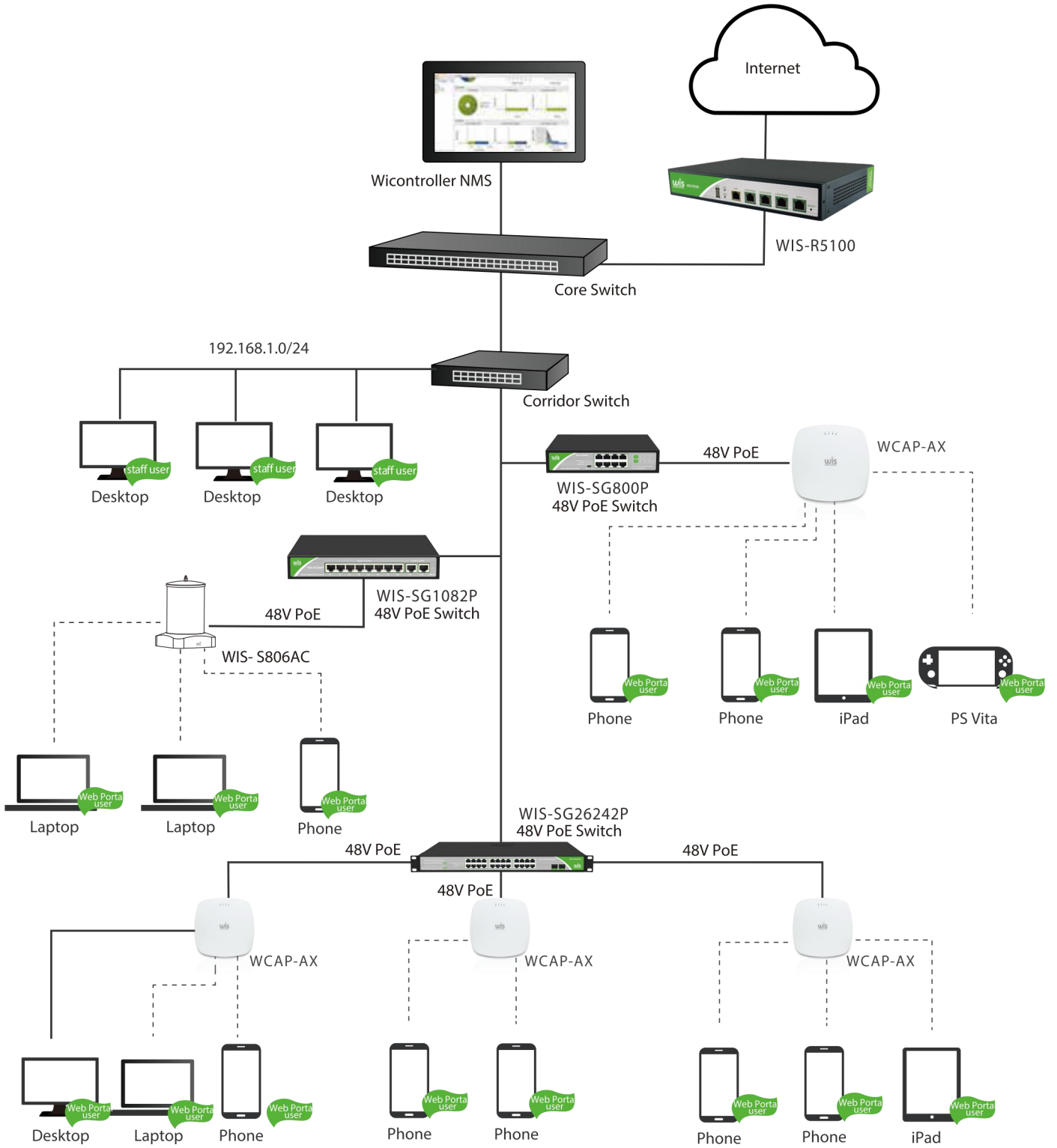
- ✦ Support VLAN Mode and Extend 250 meters Mode
- ✦ Ethernet port supports Gigabit adaptive and POE functions

DIP Switch

- ✦ **VLAN:**Port Isolation, 1-6 port is isolated each other, but all can communicate with uplink port 7/8, AI enable
- ✦ **Default:**Normal mode, all port can communicate with each other, The port AI mode is closed.
- ✦ **Extend:**Extend Mode, 3-6 port support 250 meters transmission on 10Mbps/s ,AI enable



Features



Specifications

Model	WIS-SG800P
Power	AC 100-240V 50/60Hz
Ethernet	8 Port 10/100/1000M 802.11af/at PoE Port
Switching Capacity	16Gbps
Throughput	11.9Mpps
Packet Buffer	1Mb
MAC Address	2K
Jumbo Frame	9216Kbytes
Transfer Mode	Store and forward
MTBF	100000 hour
Network protocol	IEEE802.3 (10Base-T) IEEE802.3u (100Base-TX) IEEE802.3ab (1000Base-TX) IEEE802.3x (Flow control)
PoE Protocol	IEEE802.3af (15.4W) IEEE802.3at (30W) IEEE802.3bt (60W)
Industry Standard	EMI: FCC Part 15 CISPR (EN55032) class A EMS: EN61000-4-2 (ESD)、 EN61000-4-4 (EFT)、 EN61000-4-5 (Surge)
Network Medium	10Base-T : Cat3、4、5 or above UTP(≤100m) 100Base-TX : Cat5 or above UTP(≤100m) 1000Base-TX : Cat5 or above UTP(≤100m)
Working Environment	Working Temperature: -20~50°C Storage Temperature: -40~85°C Working Humidity : 10%~90%, non-condensing Storage Temperature: 5%~90%, non-condensing Working Height: Maximum10,000 feet Storage heigh: Maximum 10,000 feet
LED Indicators	PWR (power supply) , Mode (DIP) , 1-8 Green (Link&Data)
VLAN	Port Isolation, 1-6 port is isolated each other, but all can communicate with uplink port 7/8
Power Voltage	Input Voltage : AC 100-240 V Power supply: 52V2.3A