



10-Port Gigabit POE Switch

8-port 802.af/at Gigabit PoE+2 Port Gigabit Uplink

WIS-SG1082P

Product Overview

10-Ports Gigabit PoE Switch with 8*Gigabit PoE Ports + 2*Gigabit RJ45 Port, using high-quality high-speed network IC and the most stable POE chip, POE port meets 802.3af / 802.3at standard, this series of PoE Switch can be Gigabit Ethernet The network provides a seamless connection, and the PoE power port can automatically detect and power the powered devices that comply with the IEEE802.3af / IEEE802.3at standards. The non-POE device intelligently detects no power and only transmits data.

Features

Gigabit PoE

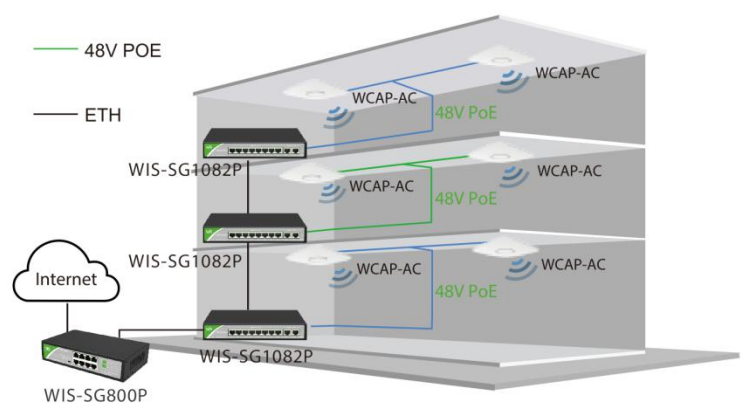
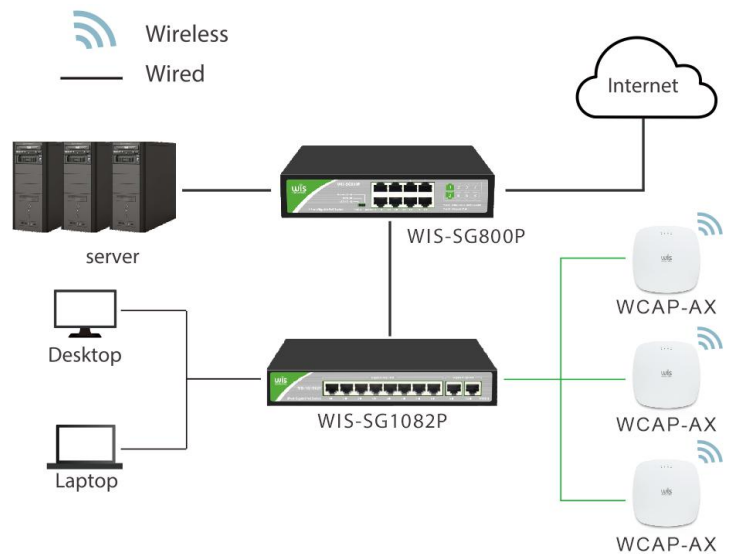
- ✦ 8* Gigabit PoE Ports
- ✦ Apply to 802.11ac series wisnetworks products

Extremely Wide Voltage Scale

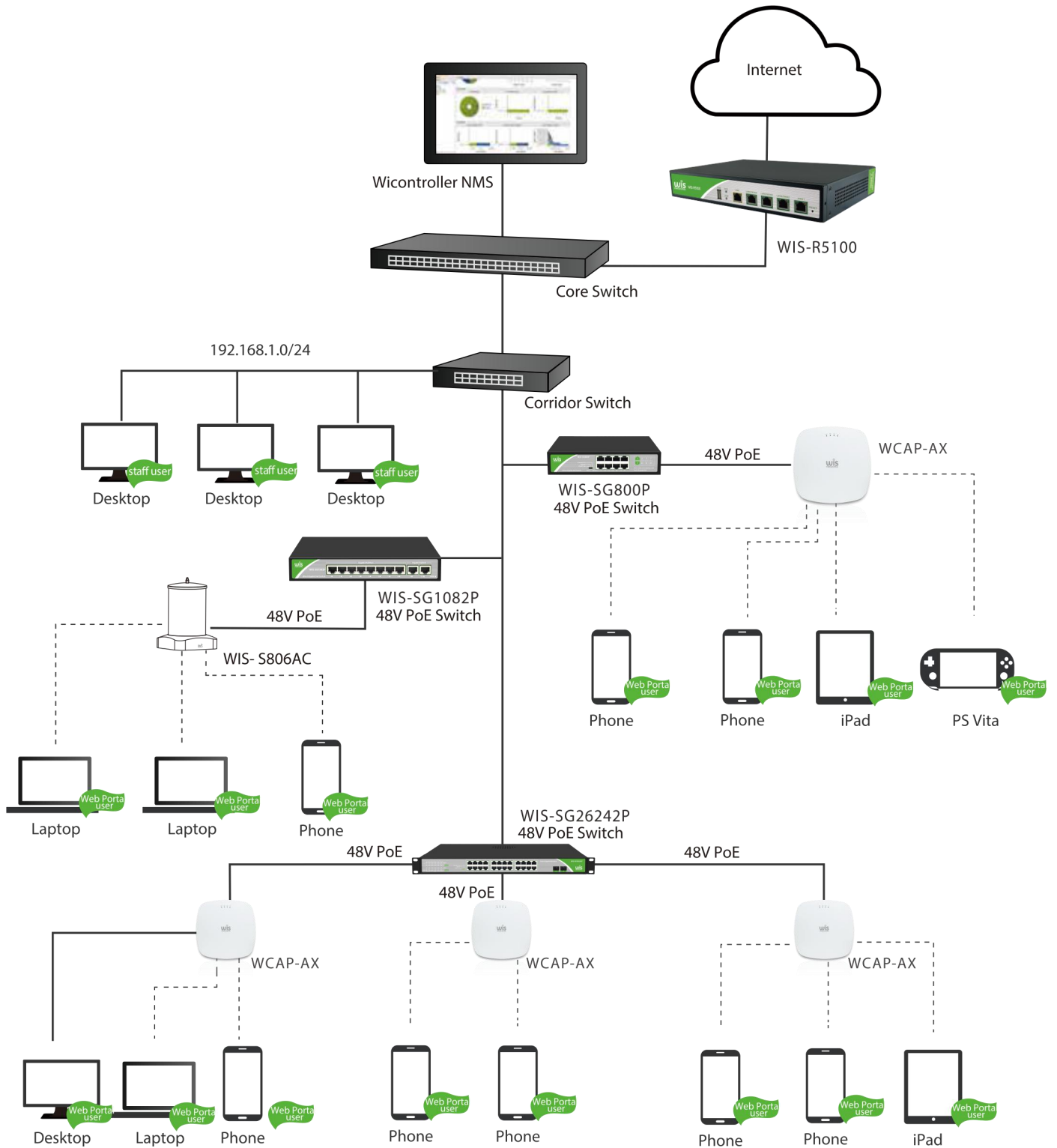
- ✦ Support VLAN Mode and Extend 250 meters Mode
- ✦ Compatible with IEEE802.3at (30W) and IEEE802.3af (15.4w)
- ✦ Ethernet port supports Gigabit adaptive and POE functions

Dual Uplink Ports

- ✦ Adapt to complex networking status
- ✦ Support for multi-switch cascading
- ✦ Support IEEE802.3、IEEE802.3u、IEEE802.3x、IEEE802.3ab、IEEE802.3z
- ✦ Support port auto flip (Auto MDI/MDIX)
- ✦ Panel indicator monitoring status and help failure analysis
- ✦ All ports support wire-speed switching
- ✦ Automatically supplied to adaptive devices



Features



Specifications

Model	WIS-SG1082P
Power	AC 100-240V 50/60Hz
Ethernet	8 Port 10/100/1000M 802.11af/at PoE Port 2 Port 1000M RJ45 Uplink
Switching Capacity	20Gbps
Throughput	14.88Mpps
Packet Buffer	1.5Mbit
MAC Address	2K
Jumbo Frame	9216Kbytes
Transfer Mode	Store and forward
MTBF	100000 hour
Network protocol	IEEE802.3 (10Base-T) IEEE802.3u (100Base-TX) IEEE802.3ab (1000Base-TX) IEEE802.3x (Flow control)
PoE Protocol	IEEE802.3af (15.4W) IEEE802.3at (30W)
Industry Standard	EMI: FCC Part 15 CISPR (EN55032) class A EMS: EN61000-4-2 (ESD)、 EN61000-4-4 (EFT)、 EN61000-4-5 (Surge)
Network Medium	10Base-T : Cat3、4、5 or above UTP(≤100m) 100Base-TX : Cat5 or above UTP(≤100m) 1000Base-TX : Cat5 or above UTP(≤100m)
Working Environment	Working Temperature: -20~50°C Storage Temperature: -40~85°C Working Humidity : 10%~90%, non-condensing Storage Temperature: 5%~90%, non-condensing Working Height: Maximum 10,000 feet Storage height: Maximum 10,000 feet
LED Indicators	PWR (power supply) , 1-10 Green (Link&Data)
Power Voltage	Power Input Voltage : AC 100-240 V Power supply: 52V2.3A