

## 26-Port Gigabit POE Switch

24-port 802.af/at Gigabit PoE+2 Port Gigabit SFP Uplink

WIS-SG26242P

## Product Overview

26 Ports Gigabit PoE Switch with 24 Port Gigabit PoE + 2 Port Gigabit SFP Uplink , using high-quality high-speed network IC and the most stable POE chip, POE port meets 802.3af / 802.3at standard, this series of PoE Switch can be 10/100M Ethernet The network provides a seamless connection, and the PoE power port can automatically detect and power the powered devices that comply with the IEEE802.3af / IEEE802.3at standards.

## Features

### Gigabit PoE

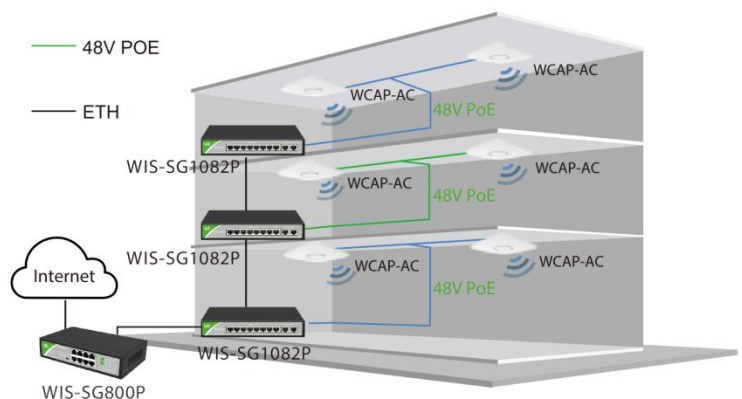
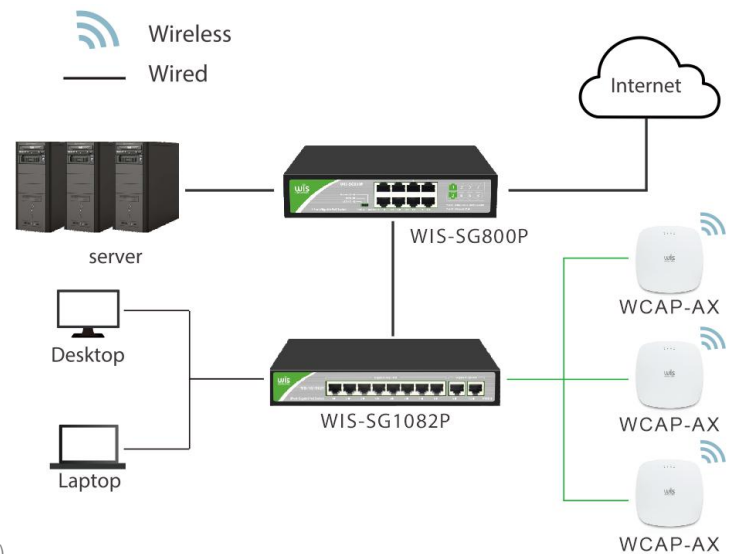
- ✦ 24\* Gigabit PoE Ports
- ✦ Apply to 802.11ac series wisnetworks products

### Extremely Wide Voltage Scale

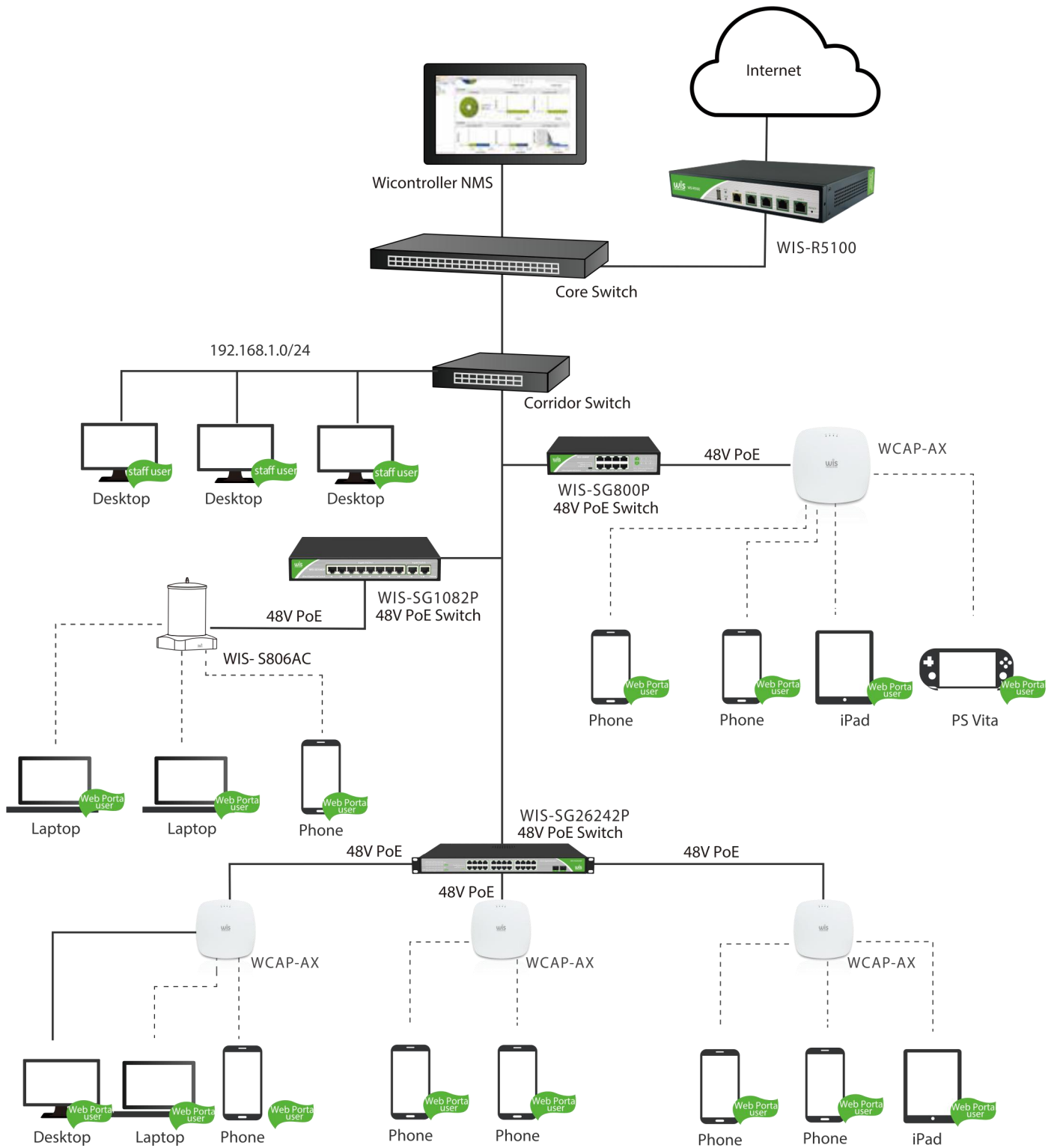
- ✦ Support VLAN Mode and Extend 250 meters Mode
- ✦ Compatible with IEEE802.3at (30W) and IEEE802.3af (15.4w)
- ✦ Ethernet port supports Gigabit adaptive and POE functions

### Dual Uplink Ports

- ✦ Adapt to complex networking status
- ✦ Support for multi-switch cascading
- ✦ Support port auto flip (Auto MDI/MDIX)
- ✦ Panel indicator monitoring status and help failure analysis
- ✦ Support IEEE802.3、IEEE802.3u、IEEE802.3x、IEEE802.3ab、IEEE802.3z
- ✦ All ports support wire-speed switching
- ✦ Automatically supplied to adaptive devices
- ✦ 1-8 Port support QoS
- ✦ Support 1U Rack Mount



## Features



## Specification

Model	WIS-SG26242P
Power	Input: AC 100-240V, 50/60Hz
Ethernet	24*10/100/1000M 802.11af/at PoE Port 2*Gigabit SFP Port
Switching Capacity	52Gbps
Throughput	38.7Mpps
Packet Buffer	4M
MAC Address	8K
Jumbo Frame	9Kbytes
Transfer Mode	Store and forward
MTBF	100000 hour
Network protocol	IEEE802.3 (10Base-T) IEEE802.3u (100Base-TX) IEEE802.3ab (1000Base-TX) IEEE802.3z (1000Base-FX) IEEE802.3x (Flow control)
PoE Protocol	IEEE802.3af (15.4W) IEEE802.3at (30W)
Industry Standard	EMI: FCC Part 15 CISPR (EN55032) class A EMS: EN61000-4-2 (ESD)、 EN61000-4-4 (EFT) EN61000-4-5 (Surge)
Network Medium	10Base-T : Cat3,4,5 or above UTP(≤100m) 100Base-TX : Cat5 or above UTP(≤100m) 1000Base-TX : Cat5 or aboveUTP(≤100m)
Optical Media	Multimode fiber : 50/125、62.5/125、100/140um Single mode fiber : 8/125、8.7/125、9/125、10/125um
Working Environment	Working Temperature: -20~50℃ Storage Temperature: -40~85℃ Working Humidity : 10%~90%, non-condensing Storage Temperature: 5%~90%, non-condensing Working Height: Maximum10,000 feet Storage heigh: Maximum 10,000 feet
LED Indicators	PWR (power supply) , ACT (Link&Data) , 1000Mbps (1000M Link)
DIP Switch	VLAN: 1-24 port is isolated each other, but all can communicate with uplink port 25/26 Default :All ports communicate freely Extend:17-24 Port support 250 meters transmission on 10Mbps/s
Power Voltage	Input Voltage: AC 100-240V, 50/60Hz Power supply: 52V7.69A