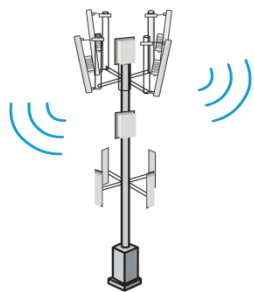




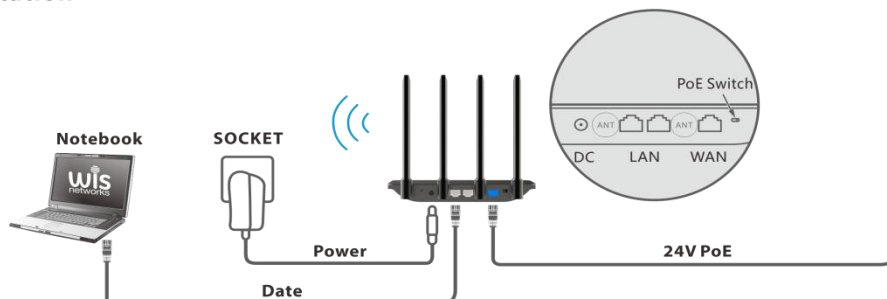
## Applications



LTE/5G Base station



5G ODU



## Product Overview

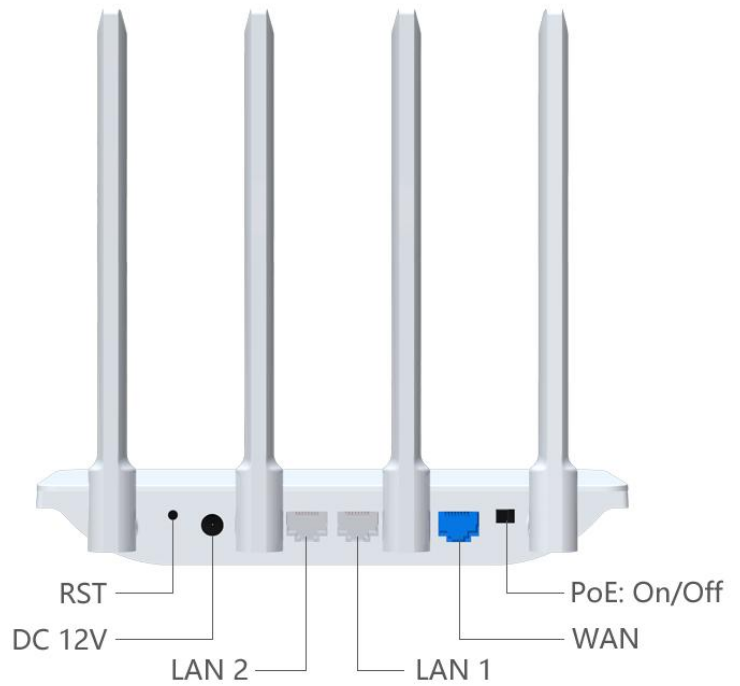
The WIS-AX3000-POE is a 2.4/5GHz 3000Mbps 4x4 MIMO PoE Router based on 802.11 ax technology, its 4\*5dBi High gain antennas design wall penetration Wi-Fi. Its WAN port support 24V Passive PoE Output

The router provides PoE power to outdoor devices through the Ethernet connection, thus the outdoor device needn't separate power connection or adaptor

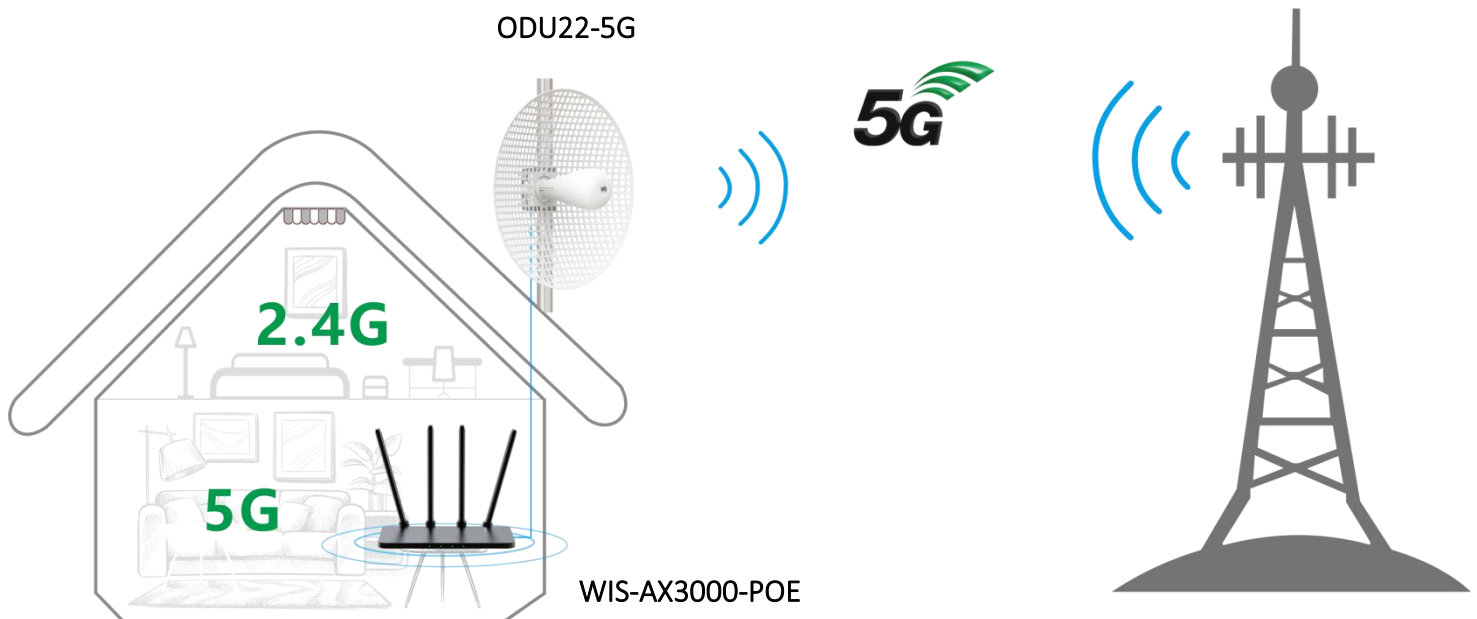
## Features

### Hardware

- Gigabit WAN with 24V PoE output
- 2\*Gigabit LAN port
- IEEE 802.11b/g/n/ac/ax 3000Mbps Wi-Fi 6
- dual-band 2.4 GHz and 5 GHz
- 4\*5dBi High gain antennas
- Switch: Off/Router/POE



## Typical Applications



## Specifications

Model	WIS-AX3000-POE
Processor	IPQ5018
Standards	IEEE 802.11ax/ac/n/a 5 GHz IEEE 802.11ax/n/b/g 2.4 GHz
Memory	64MB SDRAM
Flash	16MB
Frequency	2.4 GHz and 5 GHz dual-band
Channel Bandwidth	20 MHz, 40 or 20 MHz, 40 MHz, 80 MHz,160 MHz
WAN Port	1*10/100/1000 auto-sensing, auto-MDX
PoE Output	24V DC PoE / 1A
LAN Port	2*10/100/1000 auto-sensing, auto-MDX
Power Supply	Input: Universal range 100V-240V AC
Switch	Off/Router/POE
Reset Button	Press for 10 seconds to restore the router to its factory settings
LEDs	Power/SYS/POE
WiFi Speeds	5 GHz: 2402 Mbps (802.11ax, HE160) 2.4 GHz: 574 Mbps (802.11ax)
WiFi Range	High-Power FEM
Transmit Power	20±3 dBm
Antenna	Internal 5dBi omni, 4T4R
Active Users	64
Environment	Operating Temperature: 0°C~40°C (32°F ~104°F) Storage Temperature: -40°C~60°C (-40°F ~158°F) Operating Humidity: 10%~90% non-condensing Storage Humidity: 5%~90% non-condensing
Certification	CE, RoHS