



WIS-S516AX



802.11AX Outdoor Wireless Base Station

16dBi 120 degree dual-polarized sector antenna

WIS-S516AX

WIS Networks Ltd.

www.wisnetworks.com

E-mail: info@wisnetworks.com

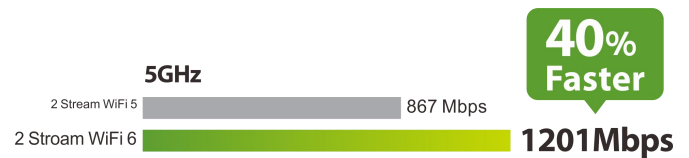
Product Overview

WIS-S516AX is robust outdoor wireless base station featuring 802.11ax technology for high end wireless coverage and point to multi-point connections. Upgrade to WiFi 6 with speeds up to 1201Mbps brings 50% faster speeds than WiFi 5.

Features

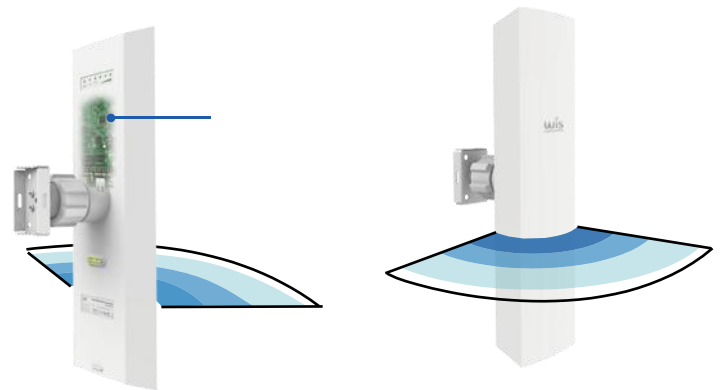
Superior WiFi 6 Speeds

- 1024 QAM 25% more data encoded at one time
- Long OFDM Symbol 11% faster speed



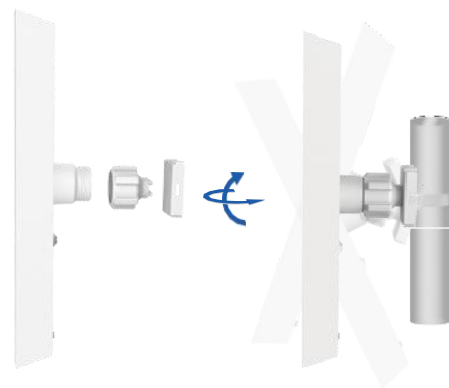
High performance

- 16dBi high antenna gain
- 23dBm high power
- 1201Mbps Wireless speed
- Gigabit LAN port



Flexibility and Simplicity

- Ball joint for all directional installation
- User-friendly design as no other tools required during installation
- Pole mounting and wall mounting



Significant Expense Reduction

- Ultra-gain in a smaller size antenna due to greatly improved antenna hardware design
- Compactly designed box reduces the transportation and logistics expense

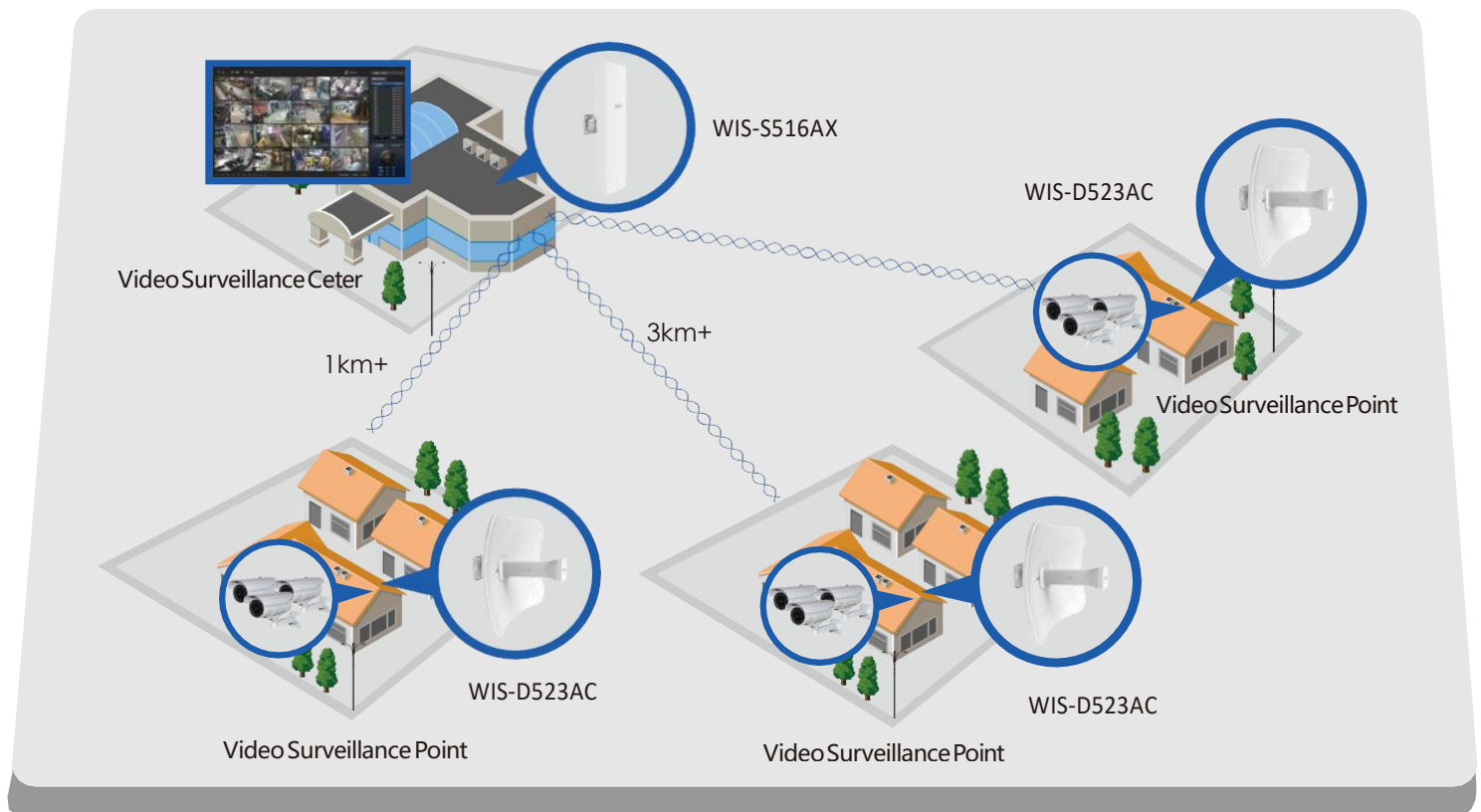
DIMENSIONS: 153*118*425MM



Features and Benefits

- Compliant with 802.11ac/n/a, speed up to 867Mbps
- Gigabit LAN port helps get maximum wireless performance
- High output transmission power and receive sensitivity optimized
- 16dBi high gain dual-polarized sector antenna
- All directional and simple installation without other mounting kits or tools
- 24V Passive PoE with remote reset for flexible deployment
- IP65 outdoor weather-proof housing and up to 24kV ESD protection

Network Diagram



Specification

Radio

- 802.11ax/ac/n/a radio (Atheros 1.2GHz)
- Speed up to 1201Mbps
- Frequency Range: 5.1-5.8GHz
- Tx Power 23dBm±2
- Rx Sensitivity 1201Mbps: -67dBm@10% PER
 - 300M: -74dBm@10% PER
 - 54M: -78dBm@10% PER
 - 1M: -98dBm@10% PER

Antenna

WIS-S516AX : 16dBi 120 degree dual-polarized sector antenna

Physical Parameters

- Dimension: 395*100*90mm
- Weight: 0.77kg
- Enclosure: Weatherproof ASA
- ESD Protection: 16kV
- Lightning Protection: 8kV
- Working Temp: -20 ~ 70°C
- Storage Temp: -40 ~ 85°C
- Working Humidity: 10%~95% non-condensing

Power

- 24VDC, 0.75A
- Power Consumption: 10W

Security

- Integrated Firewall
- WPA/WPA2;WPA-PSK/WPA2-PSK (AES/TKIP) Encryption; 64/128-bit WEP;

Interfaces

- 1x 10/100/1000 Base-T Ethernet (Gigabit LAN with Passive PoE)
- Reset

LED

- Power:On/Off
- LAN:On/Off/Flashing
- WLAN:On/Off/Flashing
- RSSI Signal: 1,2,3

Certification

- CE, FCC,RoHS

LED

- WIS-S516AX
- Quick Setup Guide
- Power Adapter with Passive PoE
- Mounting kits

Antenna